

# Casa Grande Bands Major Scale Book

Flute

Concert C Scale

Musical notation for the Concert C Scale in 4/4 time. The scale is written in treble clef and consists of two lines of music. The first line contains the ascending scale: C4, D4, E4, F4, G4, A4, B4, C5. The second line contains the descending scale: B4, A4, G4, F4, E4, D4, C4, followed by a whole rest on the C4 line.

Concert F Scale

Musical notation for the Concert F Scale in 4/4 time. The scale is written in treble clef with one flat (Bb). It consists of two lines of music. The first line contains the ascending scale: F4, G4, A4, Bb4, C5, D5, E5, F5. The second line contains the descending scale: E5, D5, C5, Bb4, A4, G4, F4, followed by a whole rest on the F4 line.

Concert Bb Scale

Musical notation for the Concert Bb Scale in 4/4 time. The scale is written in treble clef with two flats (Bb, Eb). It consists of two lines of music. The first line contains the ascending scale: Bb4, C5, D5, Eb5, F5, G5, Ab5, Bb5. The second line contains the descending scale: Ab5, G5, F5, Eb5, D5, C5, Bb4, followed by a whole rest on the Bb4 line.

Concert Eb Scale

Musical notation for the Concert Eb Scale in 4/4 time. The scale is written in treble clef with three flats (Bb, Eb, Ab). It consists of two lines of music. The first line contains the ascending scale: Eb4, F4, G4, Ab4, Bb4, C5, D5, Eb5. The second line contains the descending scale: D5, C5, Bb4, Ab4, G4, F4, Eb4, followed by a whole rest on the Eb4 line.

Concert Ab Scale

Musical notation for the Concert Ab Scale in 4/4 time. The scale is written in treble clef with four flats (Bb, Eb, Ab, Db). It consists of two lines of music. The first line contains the ascending scale: Ab4, Bb4, C5, Db5, Eb5, F5, G5, Ab5. The second line contains the descending scale: G5, F5, Eb5, Db5, C5, Bb4, Ab4, followed by a whole rest on the Ab4 line.

Concert Db Scale

Musical notation for the Concert Db Scale in 4/4 time. The scale is written in treble clef with five flats (Bb, Eb, Ab, Db, Gb). It consists of two lines of music. The first line contains the ascending scale: Db4, Eb4, F4, Gb4, Ab4, Bb4, C5, Db5. The second line contains the descending scale: C5, Bb4, Ab4, Gb4, F4, Eb4, Db4, followed by a whole rest on the Db4 line.


Concert Gb Scale

Musical notation for the Concert Gb Scale in 4/4 time. The scale is written in treble clef with six flats (Bb, Eb, Ab, Db, Gb, Cb). It consists of two lines of music. The first line contains the ascending scale: Gb4, Ab4, Bb4, Cb5, Db5, Eb5, F5, Gb5. The second line contains the descending scale: F5, Eb5, Db5, Cb5, Bb4, Ab4, Gb4, followed by a whole rest on the Gb4 line.

Concert Cb Scale

Musical notation for the Concert Cb Scale in 4/4 time. The scale is written in treble clef with seven flats (Bb, Eb, Ab, Db, Gb, Cb, Fb). It consists of two lines of music. The first line contains the ascending scale: Cb4, Db4, Eb4, Fb4, Gb4, Ab4, Bb4, Cb5. The second line contains the descending scale: Bb4, Ab4, Gb4, Fb4, Eb4, Db4, Cb4, followed by a whole rest on the Cb4 line.

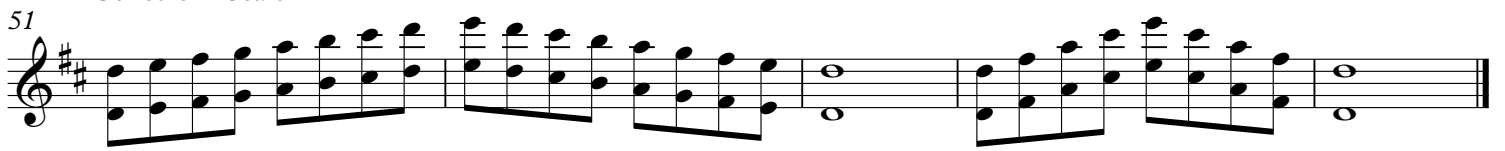
41 Concert C Scale

Musical notation for the Concert C Scale. It consists of two staves. The upper staff is in treble clef and contains the ascending and descending scales. The lower staff is in bass clef and contains the corresponding bass notes. The scale is in C major, with a key signature of one flat (Bb) and a common time signature (C). The piece ends with a double bar line.

46 Concert G Scale

Musical notation for the Concert G Scale. It consists of two staves. The upper staff is in treble clef and contains the ascending and descending scales. The lower staff is in bass clef and contains the corresponding bass notes. The scale is in G major, with a key signature of one sharp (F#) and a common time signature (C). The piece ends with a double bar line.

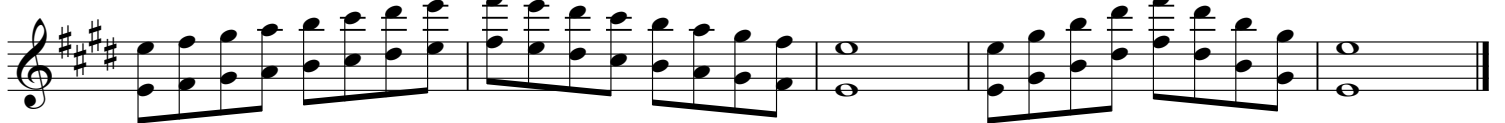
51 Concert D Scale

Musical notation for the Concert D Scale. It consists of two staves. The upper staff is in treble clef and contains the ascending and descending scales. The lower staff is in bass clef and contains the corresponding bass notes. The scale is in D major, with a key signature of two sharps (F# and C#) and a common time signature (C). The piece ends with a double bar line.


56 Concert A Scale

Musical notation for the Concert A Scale. It consists of two staves. The upper staff is in treble clef and contains the ascending and descending scales. The lower staff is in bass clef and contains the corresponding bass notes. The scale is in A major, with a key signature of three sharps (F#, C#, and G#) and a common time signature (C). The piece ends with a double bar line.

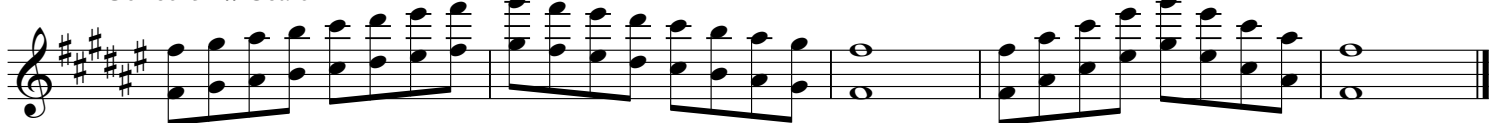
Concert E Scale

Musical notation for the Concert E Scale. It consists of two staves. The upper staff is in treble clef and contains the ascending and descending scales. The lower staff is in bass clef and contains the corresponding bass notes. The scale is in E major, with a key signature of four sharps (F#, C#, G#, and D#) and a common time signature (C). The piece ends with a double bar line.

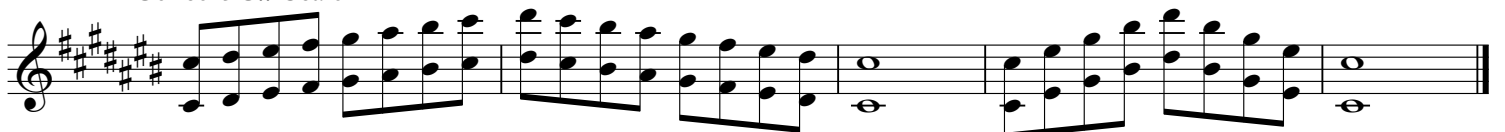
Concert B Scale

Musical notation for the Concert B Scale. It consists of two staves. The upper staff is in treble clef and contains the ascending and descending scales. The lower staff is in bass clef and contains the corresponding bass notes. The scale is in B major, with a key signature of five sharps (F#, C#, G#, D#, and A#) and a common time signature (C). The piece ends with a double bar line.

Concert F# Scale

Musical notation for the Concert F# Scale. It consists of two staves. The upper staff is in treble clef and contains the ascending and descending scales. The lower staff is in bass clef and contains the corresponding bass notes. The scale is in F# major, with a key signature of six sharps (F#, C#, G#, D#, A#, and E#) and a common time signature (C). The piece ends with a double bar line.

Concert C# Scale

Musical notation for the Concert C# Scale. It consists of two staves. The upper staff is in treble clef and contains the ascending and descending scales. The lower staff is in bass clef and contains the corresponding bass notes. The scale is in C# major, with a key signature of seven sharps (F#, C#, G#, D#, A#, E#, and B#) and a common time signature (C). The piece ends with a double bar line.

# Casa Grande Bands Major Scale Book

Oboe

Concert C Scale



Concert F Scale



Concert Bb Scale



Concert Eb Scale



Concert Ab Scale



Concert Db Scale



Concert Gb Scale



Concert Cb Scale



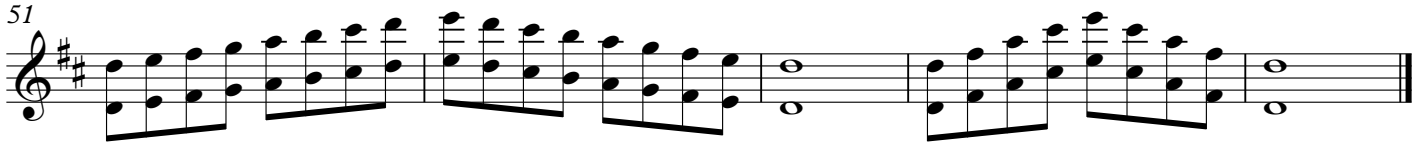
## 41 Concert C Scale



## 46 Concert G Scale



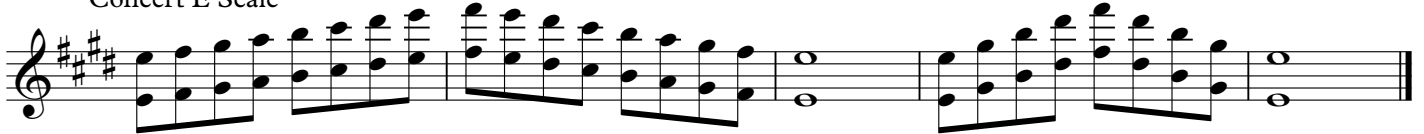
## 51 Concert D Scale



## 56 Concert A Scale



## Concert E Scale



## Concert B Scale



## Concert F# Scale



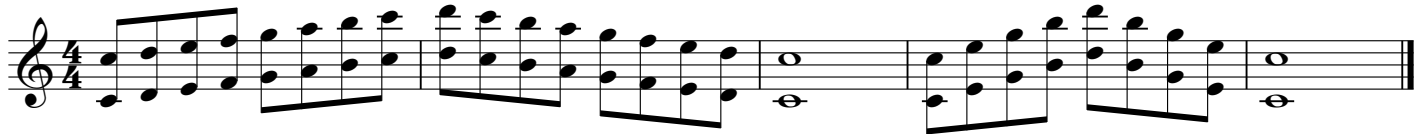
## Concert C# Scale



Clarinet/ Bass Clarinet

# Casa Grande Bands Major Scale Book

C Scale (Concert Bb Scale)



F Scale (Concert Eb Scale)



Bb Scale (Concert Ab Scale)



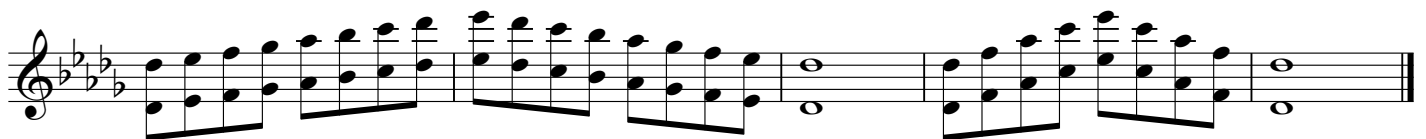
Eb Scale (Concert Db Scale)



Ab Scale (Concert Gb Scale)



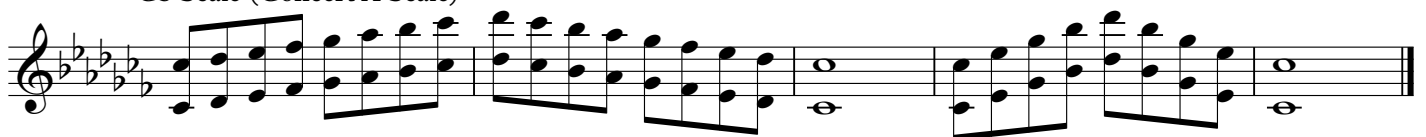
Db Scale (Concert Cb Scale)



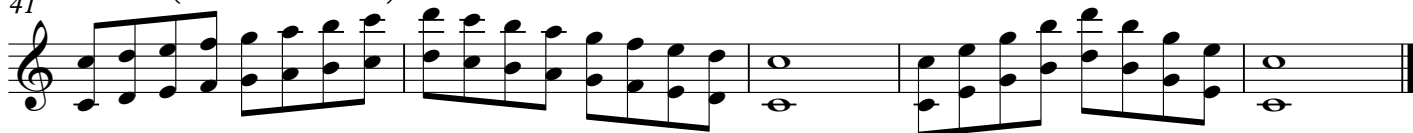
Gb Scale (Concert E Scale)



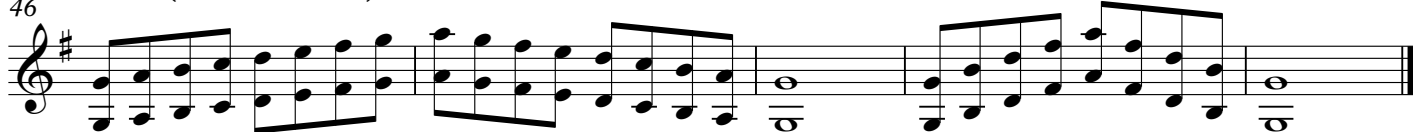
Cb Scale (Concert A Scale)



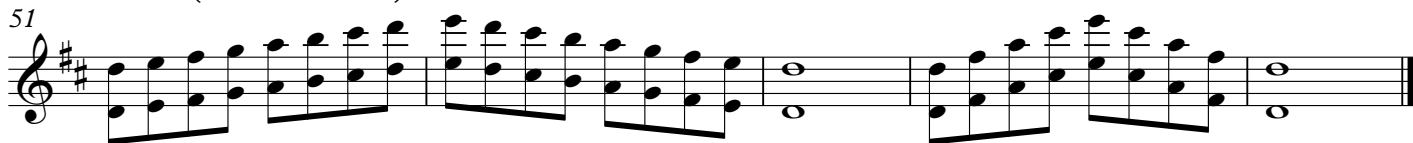
## 41 C Scale (Concert Bb Scale)



## 46 G Scale (Concert F Scale)



## 51 D Scale (Concert C Scale)



## 56 A Scale (Concert G Scale)



## E Scale (Concert D Scale)



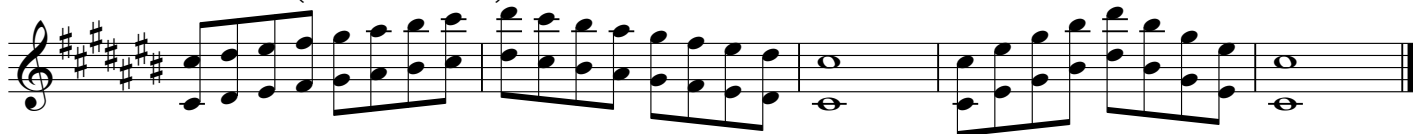
## B Scale (Concert A Scale)



## F# Scale (Concert E Scale)



## C# Scale (Concert B Scale)



# Casa Grande Bands Major Scale Book

Alto Sax/ Tenor Sax/ Bari Sax

C Scale (Concert Eb Scale)



F Scale (Concert Ab Scale)



Bb Scale (Concert Db Scale)



Eb Scale (Concert Gb Scale)



Ab Scale (Concert Cb Scale/Concert B Scale)



Db Scale (Concert E Scale)



Gb Scale (Concert A Scale)



Cb Scale (Concert D Scale)



## 41 C Scale (Concert Eb Scale)



## 46 G Scale (Concert Bb Scale)



## 51 D Scale (Concert F Scale)



## 56 A Scale (Concert C Scale)



## E Scale (Concert G Scale)



## B Scale (Concert D Scale)



## F# Scale (Concert A Scale)



## C# Scale (Concert E Scale)





# Casa Grande Bands Major Scale Book

Trumpet T. C. Euphonium

C Scale (Concert Bb Scale)



F Scale (Concert Eb Scale)



Bb Scale (Concert Ab Scale)



Eb Scale (Concert Db Scale)



Ab Scale (Concert Gb Scale)



Db Scale (Concert Cb Scale)



Gb Scale (Concert E Scale)



Cb Scale (Concert A Scale)



## 41 C Scale (Concert Bb Scale)



## 46 G Scale (Concert F Scale)



## 51 D Scale (Concert C Scale)



## 56 A Scale (Concert G Scale)



## E Scale (Concert D Scale)



## B Scale (Concert A Scale)



## F# Scale (Concert E Scale)



## C# Scale (Concert B Scale)



# Casa Grande Bands Major Scale Book

Horn in F

C Scale (Concert F Scale)



F Scale (Concert Bb Scale)



Bb Scale (Concert Eb Scale)



Eb Scale (Concert Ab Scale)



Ab Scale (Concert Db Scale)



Db Scale (Concert Gb Scale)



Gb Scale (Concert Cb Scale)



Cb Scale (Concert E Scale)



## 41 C Scale (Concert F Scale)



## 46 G Scale (Concert C Scale)



## 51 D Scale (Concert G Scale)



## 56 A Scale (Concert D Scale)



## E Scale (Concert A Scale)



## B Scale (Concert E Scale)



## F# Scale (Concert B Scale)



## C# Scale (Concert F# Scale)



# Casa Grande Bands Major Scale Book

## Trombone B. C Euphonium

### Concert C Scale



### Concert F Scale



### Concert Bb Scale



### Concert Eb Scale



### Concert Ab Scale



### Concert Db Scale



### Concert Gb Scale



### Concert Cb Scale



## 41 Concert C Scale



## 46 Concert G Scale



## 51 Concert D Scale



## 56 Concert A Scale



## Concert E Scale



## Concert B Scale



## Concert F# Scale



## Concert C# Scale



# Casa Grande Bands Major Scale Book

## Tuba

### Concert C Scale



### Concert F Scale



### Concert Bb Scale



### Concert Eb Scale



### Concert Ab Scale



### Concert Db Scale



### Concert Gb Scale



### Concert Cb Scale



41 Concert C Scale

Musical notation for the Concert C Scale in bass clef. The scale is written in C major, starting on middle C (C4) and ascending to C5. The notation consists of a single line with a bass clef, a key signature of one sharp (F#), and a common time signature (C). The scale is written in eighth notes, with a final whole note C5 at the end of the line.

46 Concert G Scale

Musical notation for the Concert G Scale in bass clef. The scale is written in G major, starting on G3 and ascending to G4. The notation consists of a single line with a bass clef, a key signature of two sharps (F# and C#), and a common time signature (C). The scale is written in eighth notes, with a final whole note G4 at the end of the line.

51 Concert D Scale

Musical notation for the Concert D Scale in bass clef. The scale is written in D major, starting on D3 and ascending to D4. The notation consists of a single line with a bass clef, a key signature of two sharps (F# and C#), and a common time signature (C). The scale is written in eighth notes, with a final whole note D4 at the end of the line.

56 Concert A Scale

Musical notation for the Concert A Scale in bass clef. The scale is written in A major, starting on A2 and ascending to A3. The notation consists of a single line with a bass clef, a key signature of three sharps (F#, C#, and G#), and a common time signature (C). The scale is written in eighth notes, with a final whole note A3 at the end of the line.

Concert E Scale

Musical notation for the Concert E Scale in bass clef. The scale is written in E major, starting on E2 and ascending to E3. The notation consists of a single line with a bass clef, a key signature of four sharps (F#, C#, G#, and D#), and a common time signature (C). The scale is written in eighth notes, with a final whole note E3 at the end of the line.

Concert B Scale

Musical notation for the Concert B Scale in bass clef. The scale is written in B major, starting on B1 and ascending to B2. The notation consists of a single line with a bass clef, a key signature of five sharps (F#, C#, G#, D#, and A#), and a common time signature (C). The scale is written in eighth notes, with a final whole note B2 at the end of the line.

Concert F# Scale

Musical notation for the Concert F# Scale in bass clef. The scale is written in F# major, starting on F#1 and ascending to F#2. The notation consists of a single line with a bass clef, a key signature of six sharps (F#, C#, G#, D#, A#, and E#), and a common time signature (C). The scale is written in eighth notes, with a final whole note F#2 at the end of the line.

Concert C# Scale

Musical notation for the Concert C# Scale in bass clef. The scale is written in C# major, starting on C#1 and ascending to C#2. The notation consists of a single line with a bass clef, a key signature of seven sharps (F#, C#, G#, D#, A#, E#, and B#), and a common time signature (C). The scale is written in eighth notes, with a final whole note C#2 at the end of the line.